

Piedmont Middle School 2010 English Language Arts Survey



Participants

- Parents of students at all sites were invited to participate via email, parent newsletter, and at the end of the online registration process.



Participants

School	09-10 Enroll.	Number of Respondents	Percent of Enrollment
Elementary	1098	277	25%
PMS	588	250	43%
PHS	782	341	44%
Total	2468	868	35%

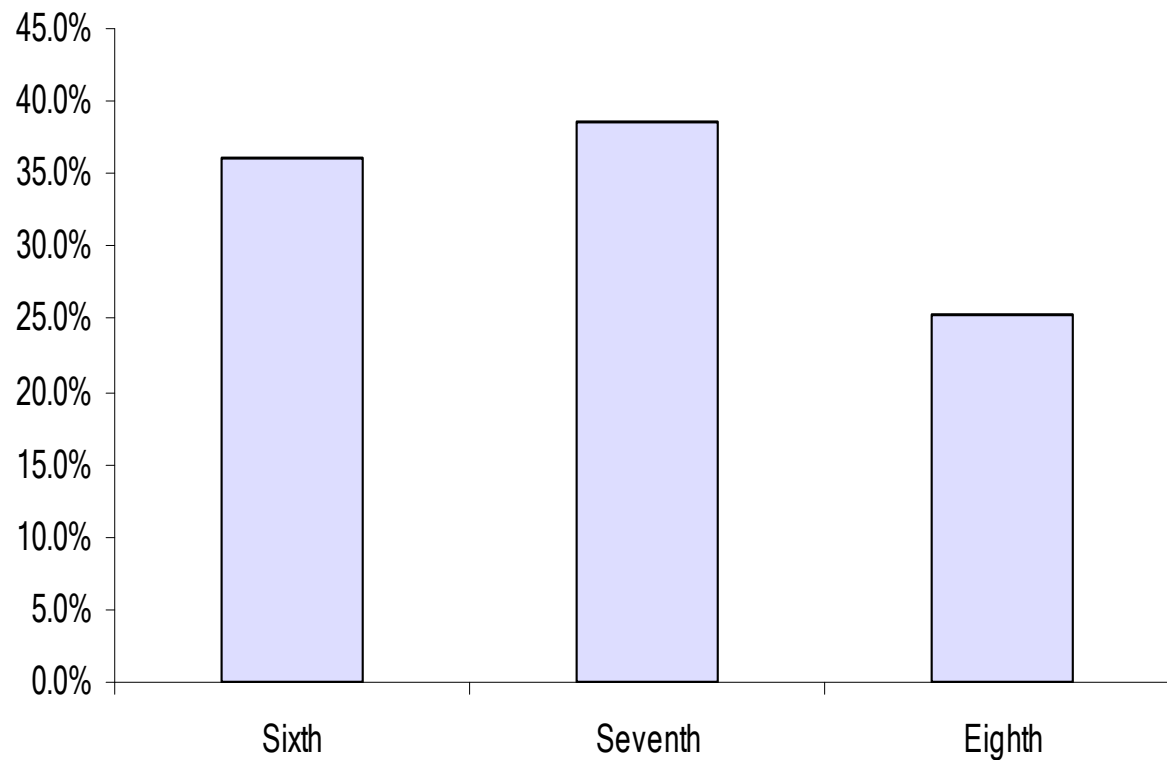


Level of overall satisfaction with the educational program in Piedmont Unified.

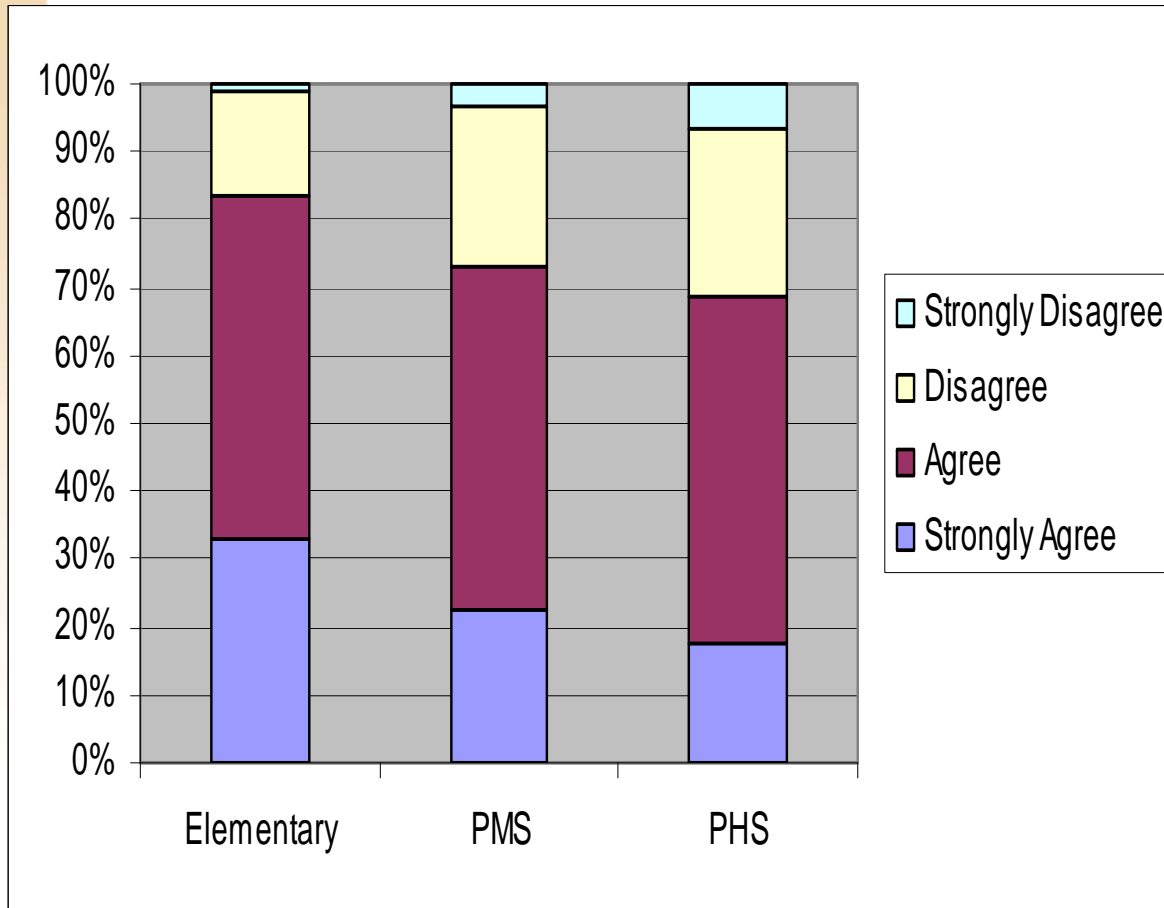
	Very Satisfied	Satisfied	VSat + Sat
Beach (114)	60%	35%	95%
Havens (85)	40%	48%	88%
Wildwood (58)	52%	43%	95%
All Elem. (277)	50%	42%	92%
PMS (250)	50%	42%	92%
PHS (341)	28%	60%	88%

PMS Participants

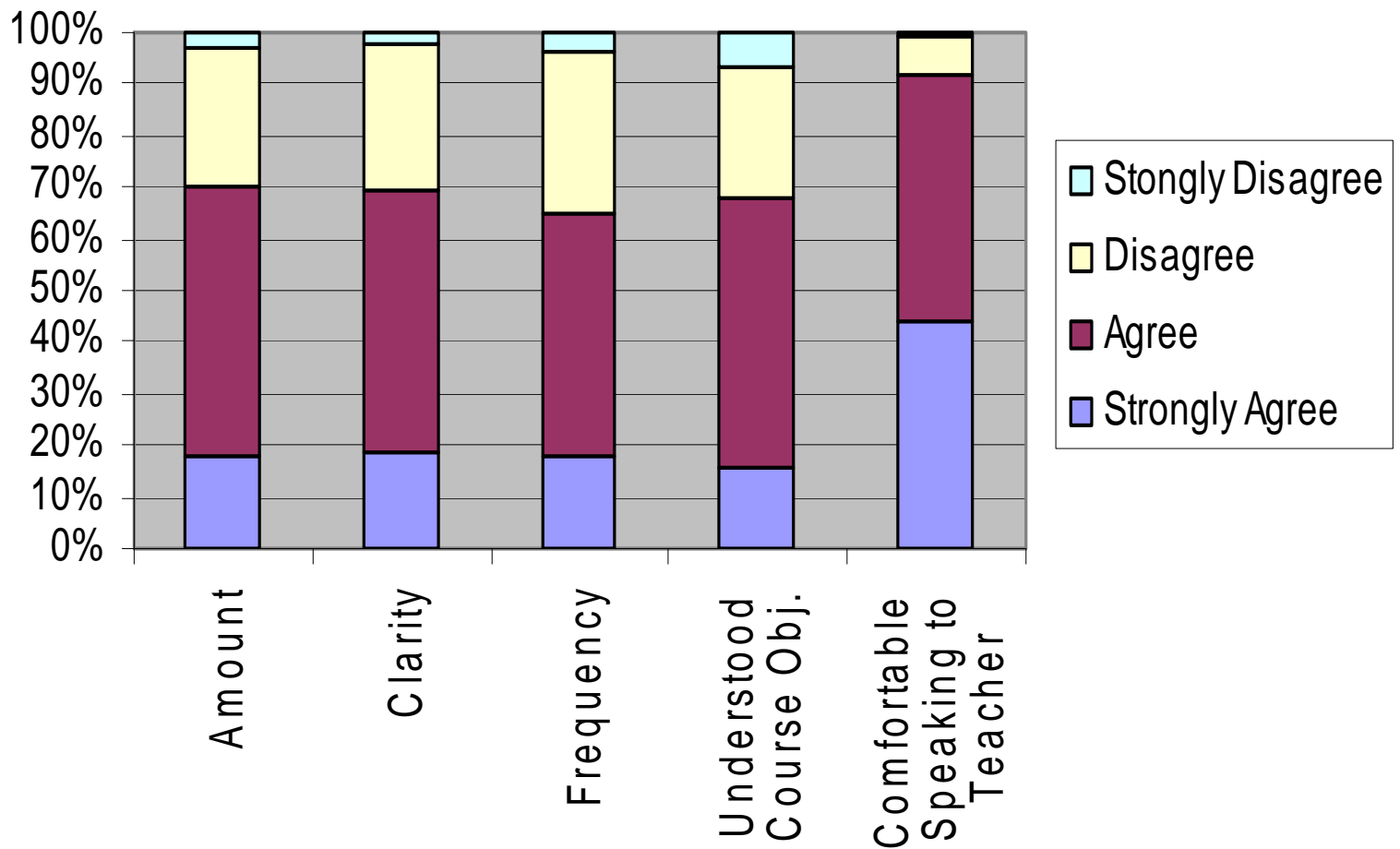
Your student's grade during the 2009-2010 school year?



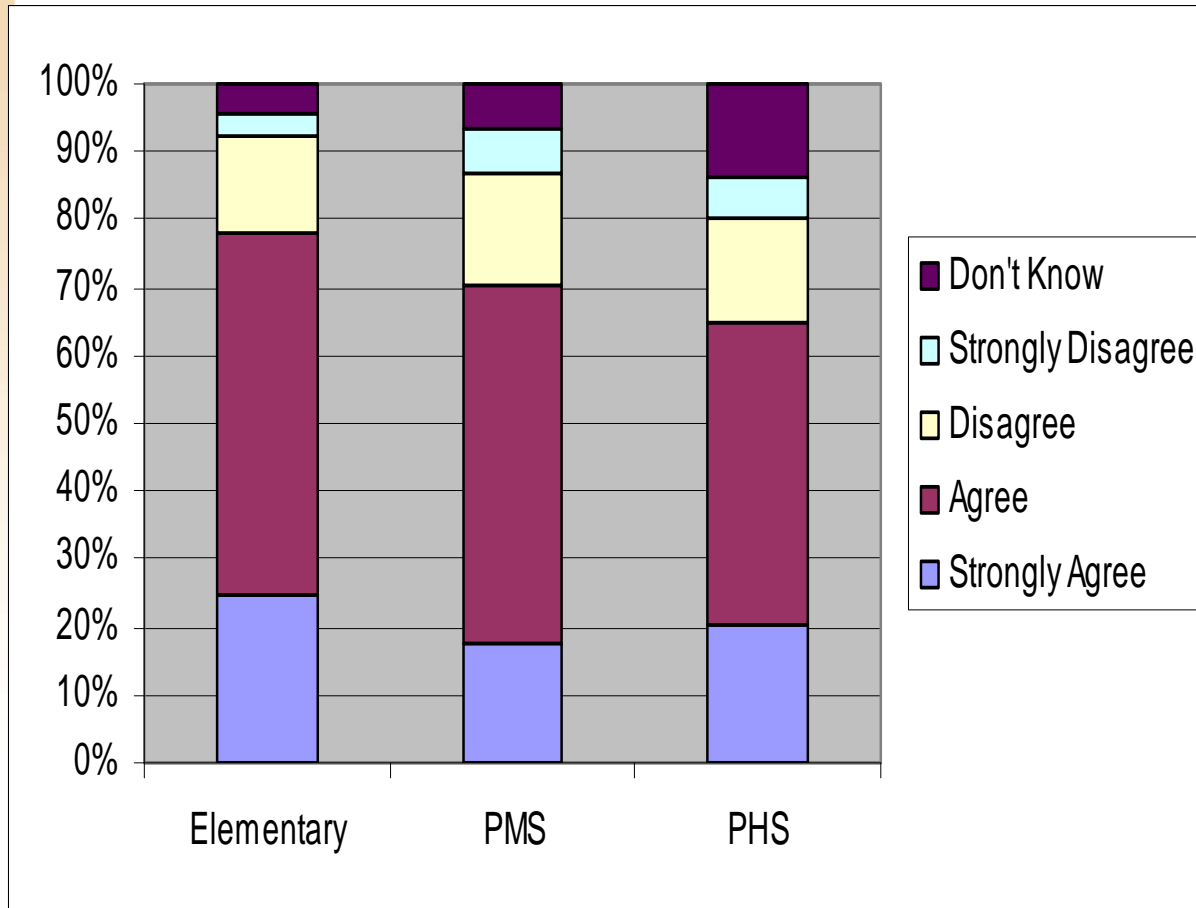
Communications



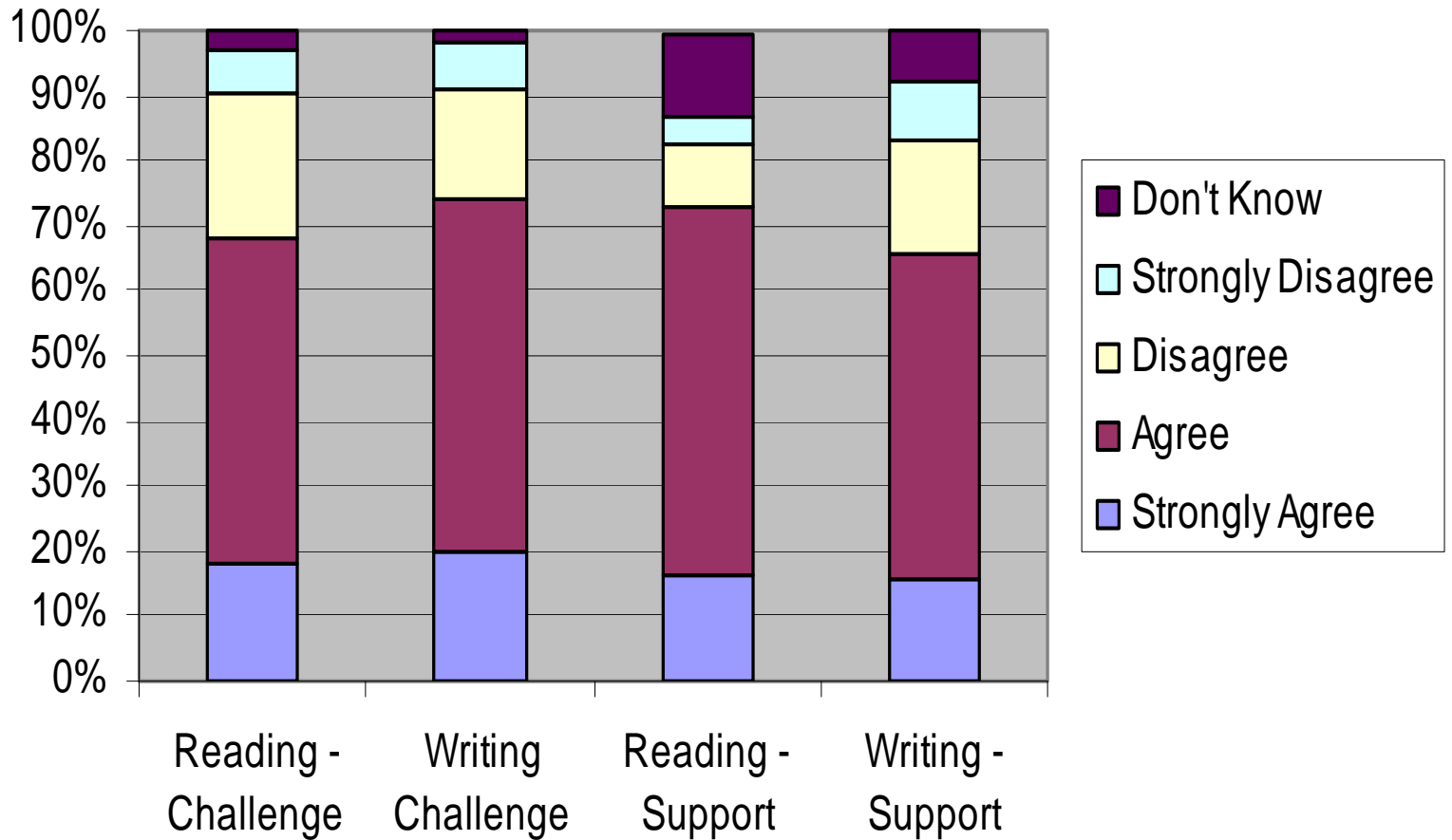
PMS Communications



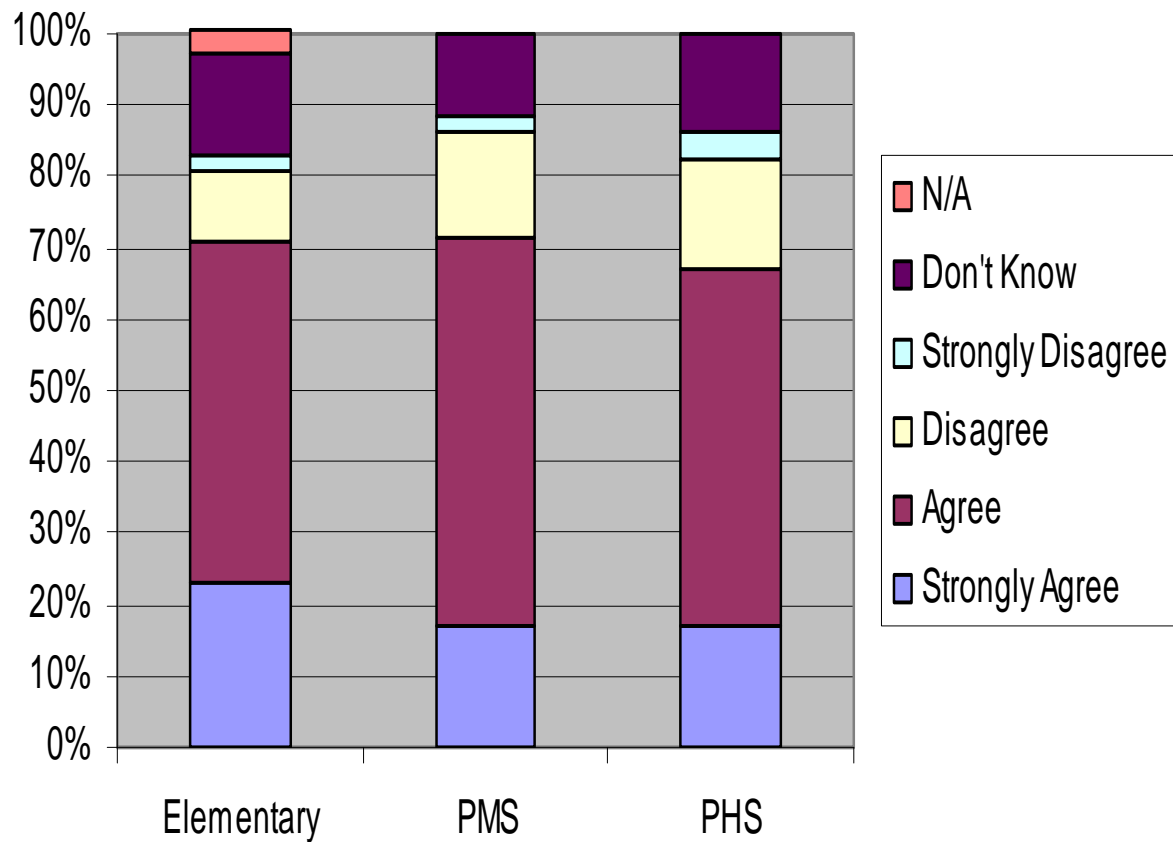
Sufficiency of Challenge and Support



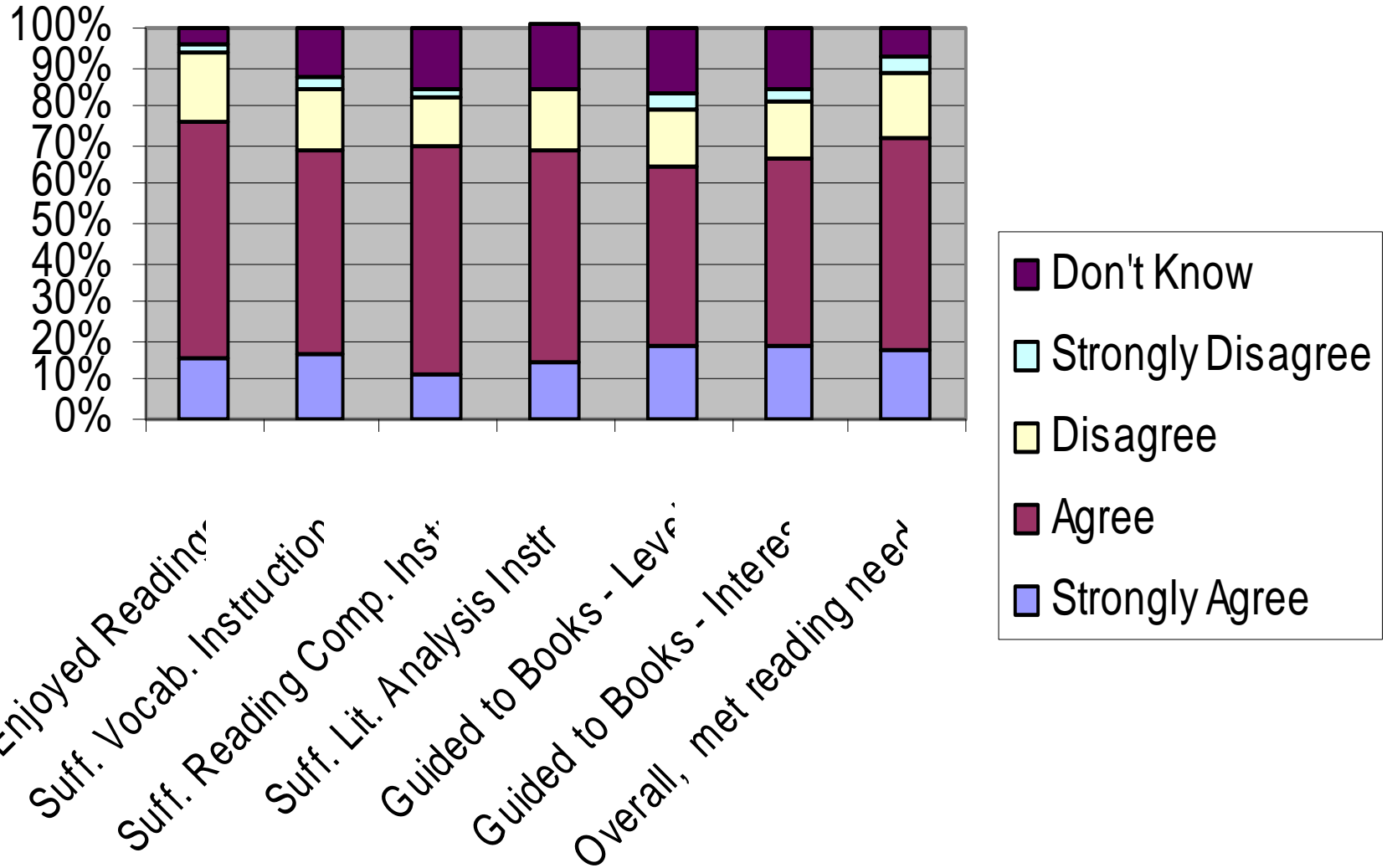
PMS Challenge and Support



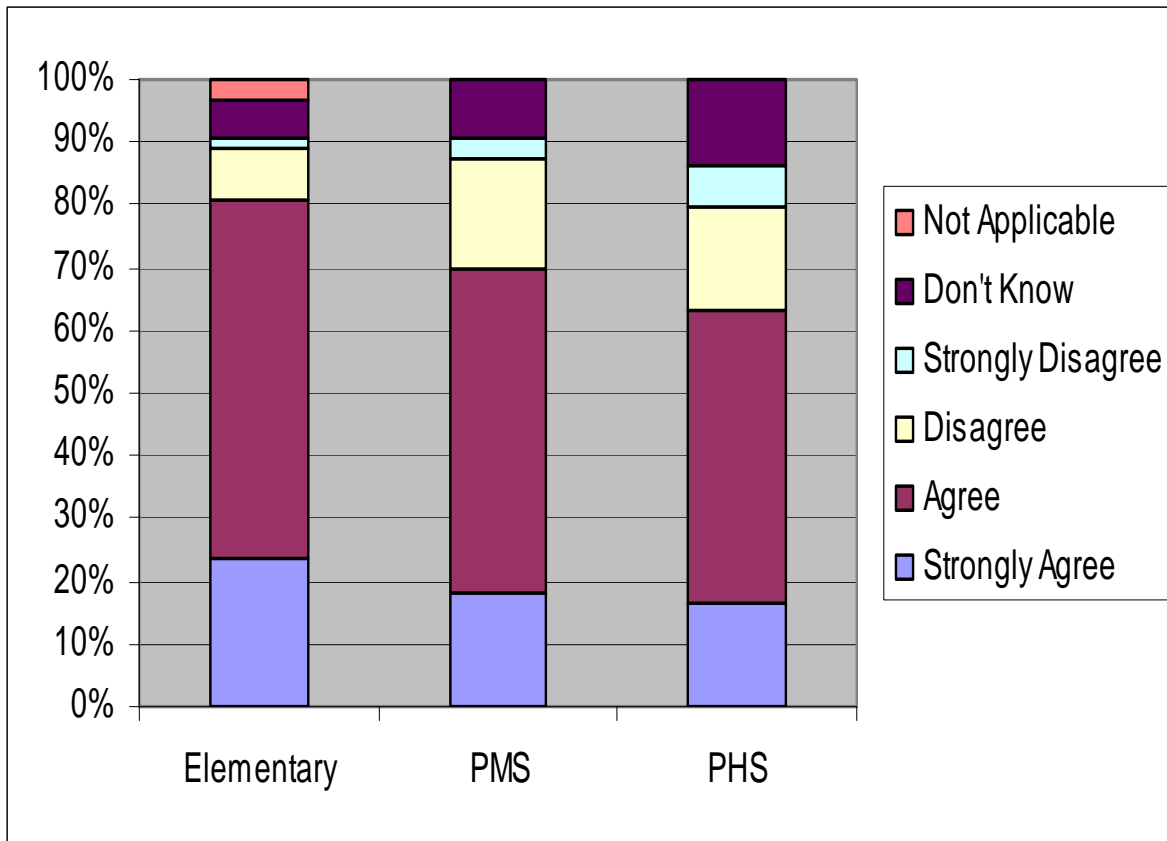
Reading



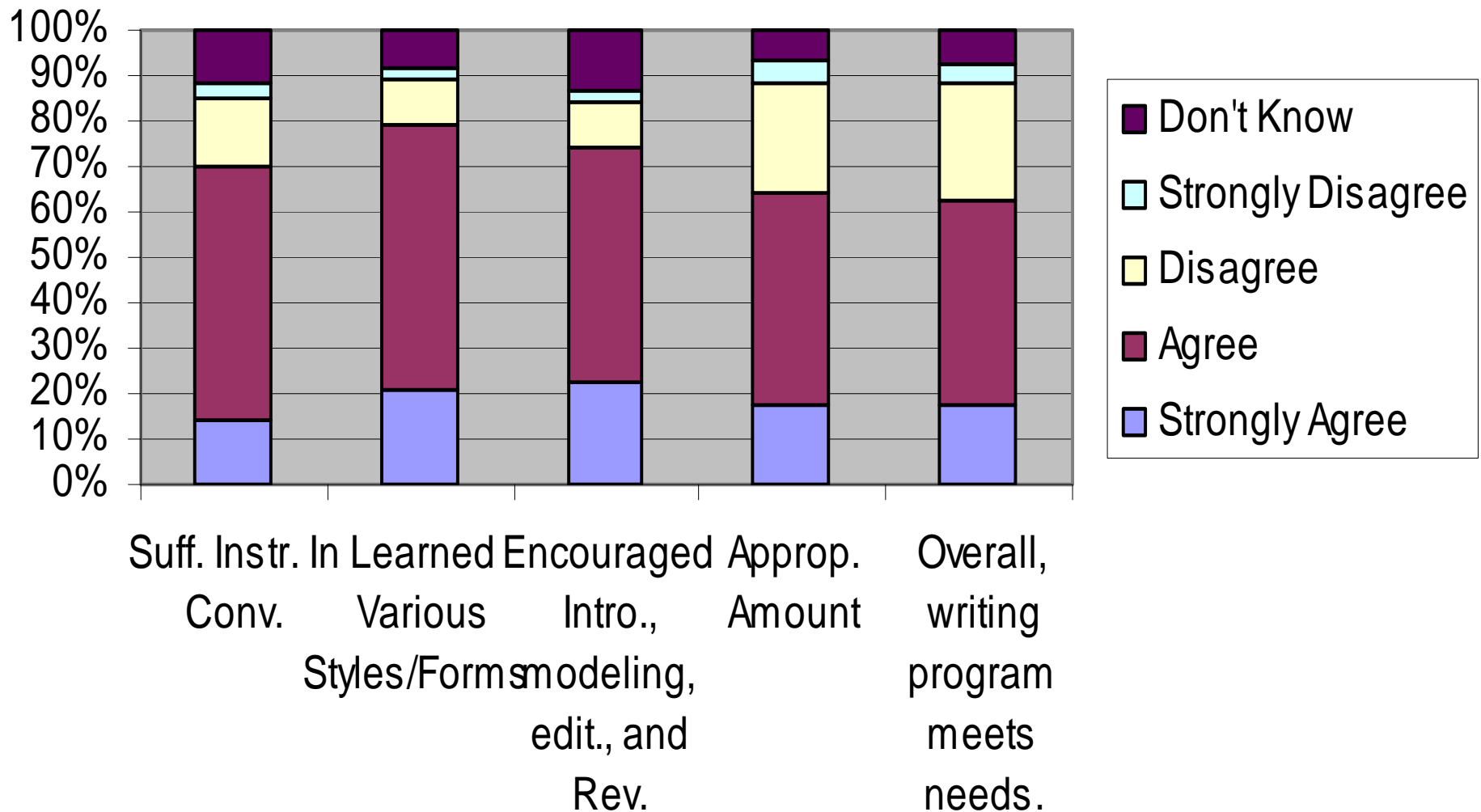
PMS Reading



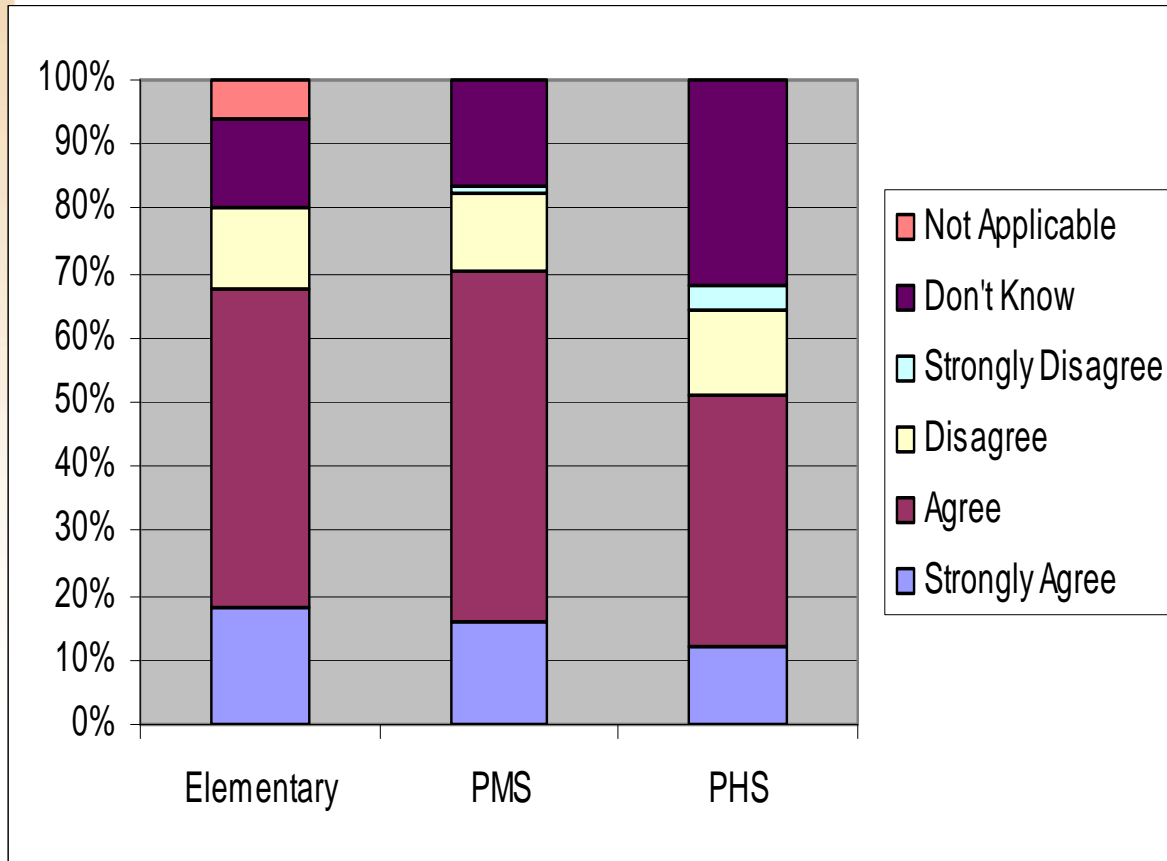
Writing



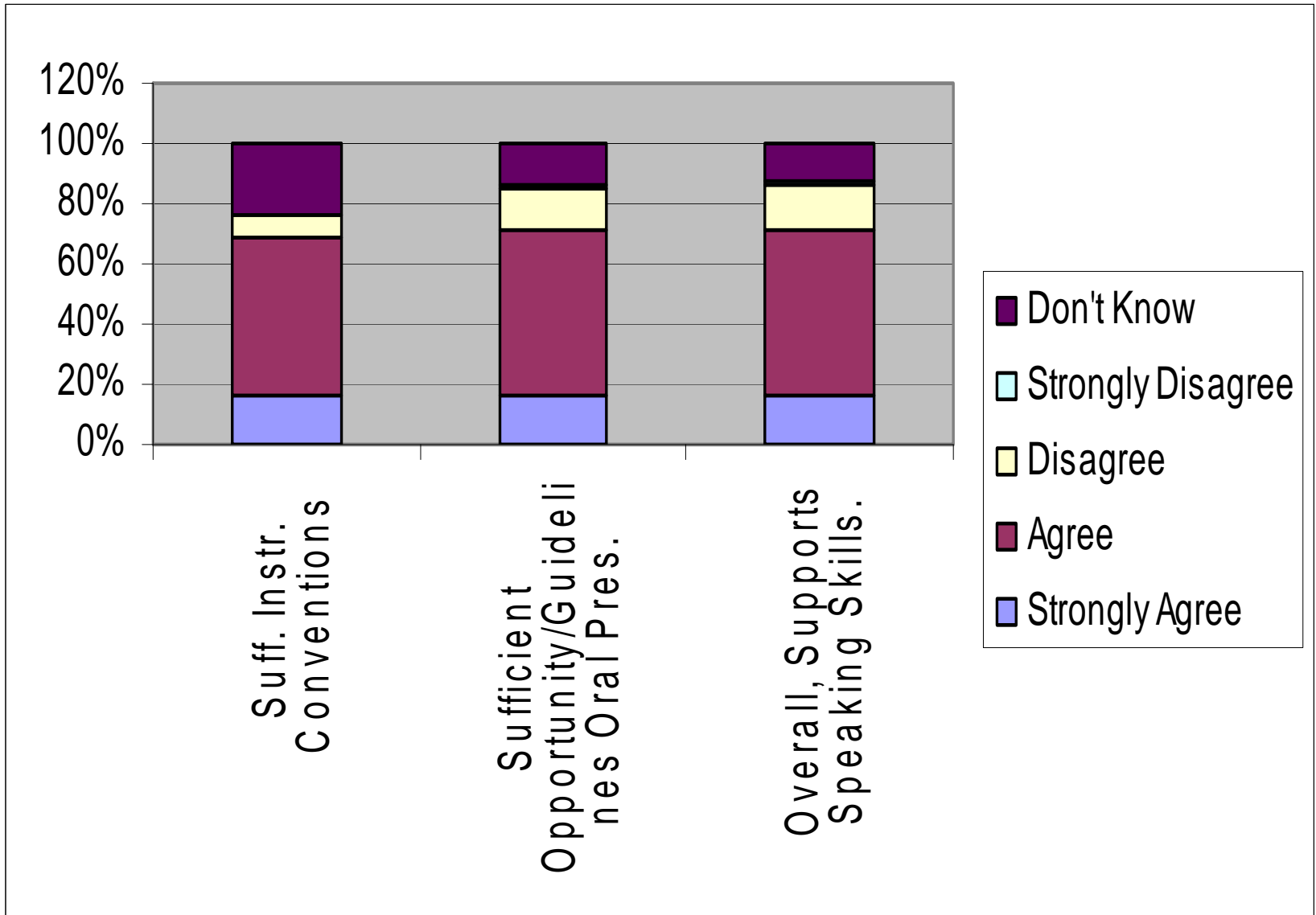
PMS Writing



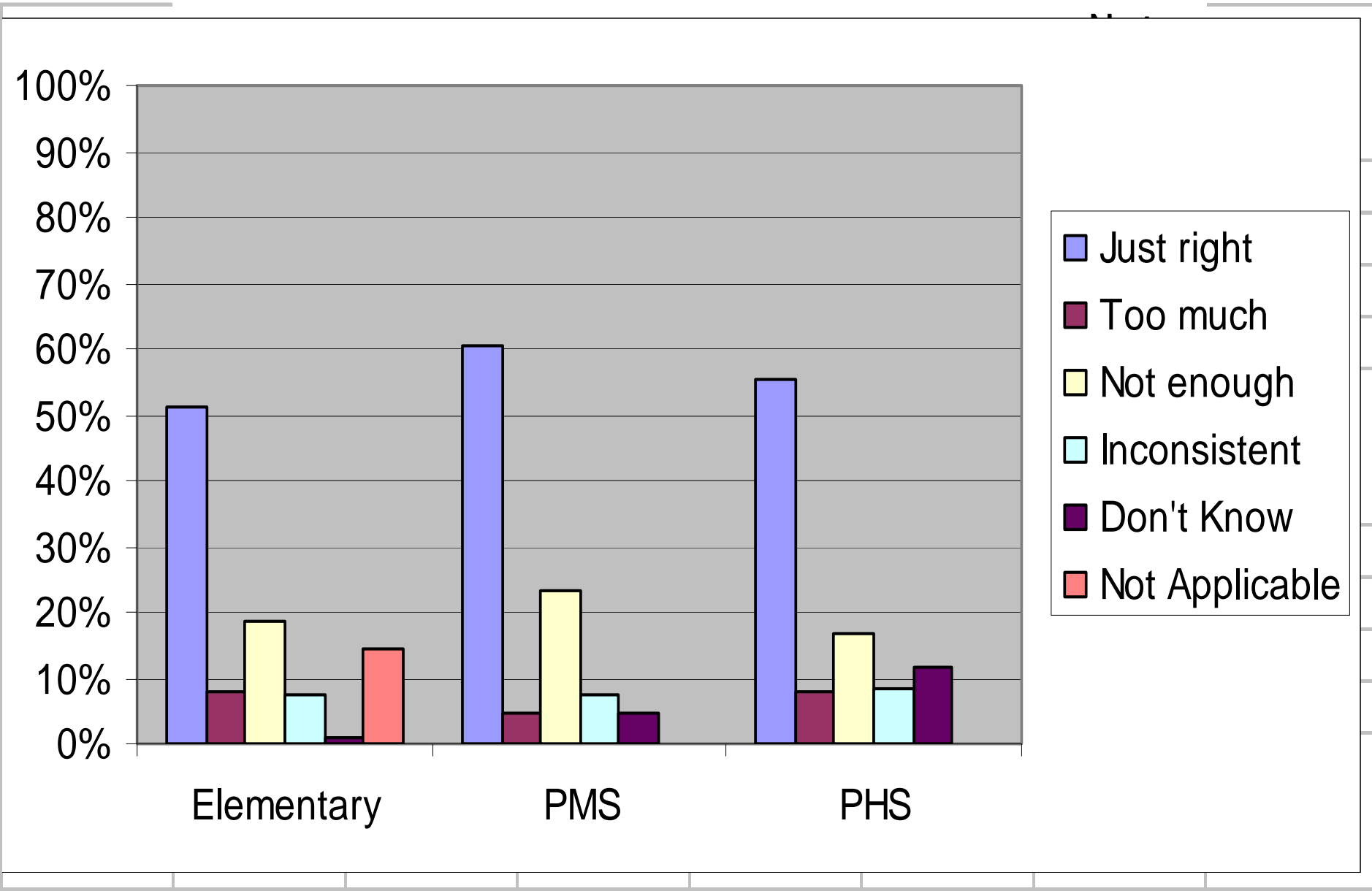
Speaking



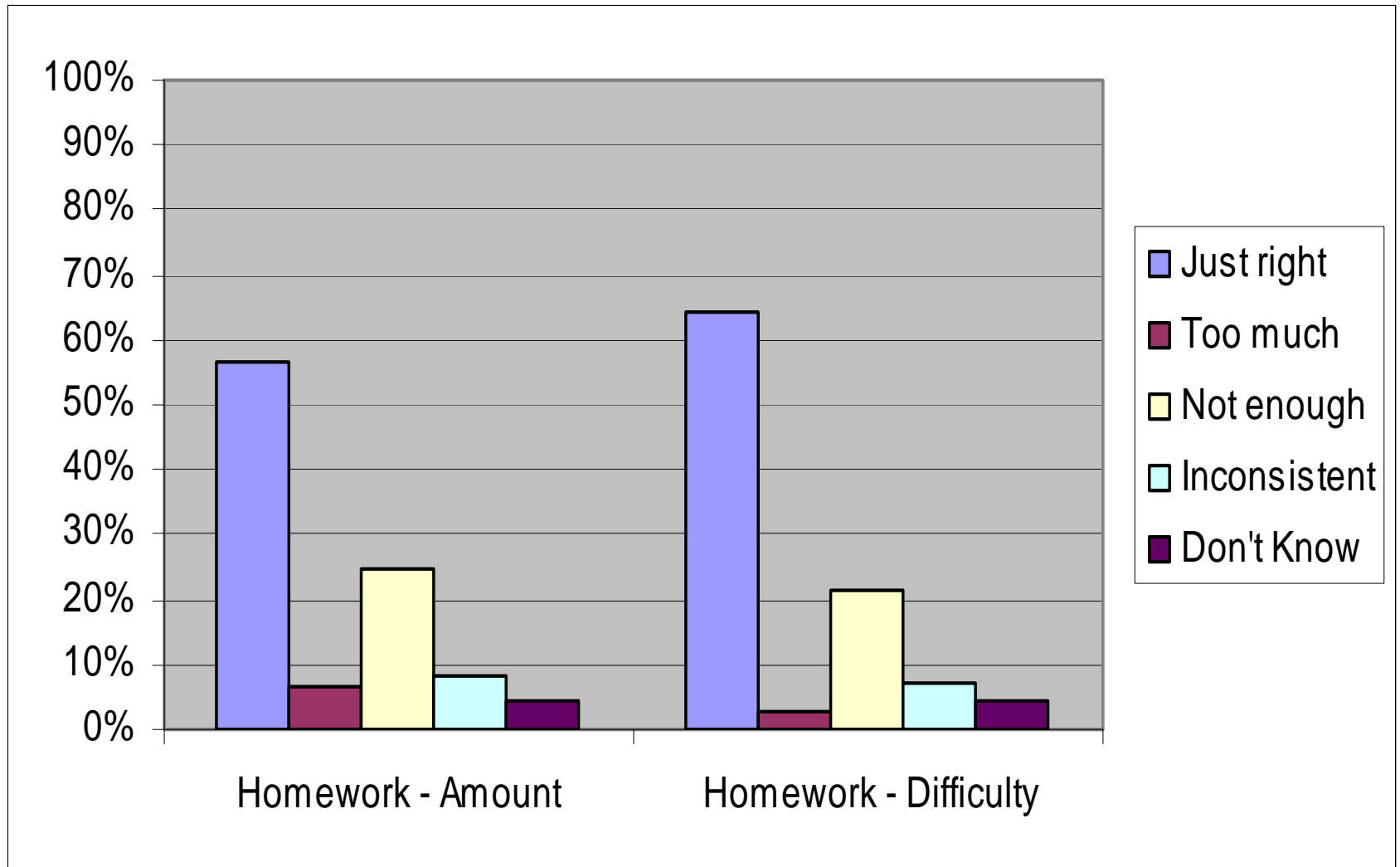
PMS Speaking



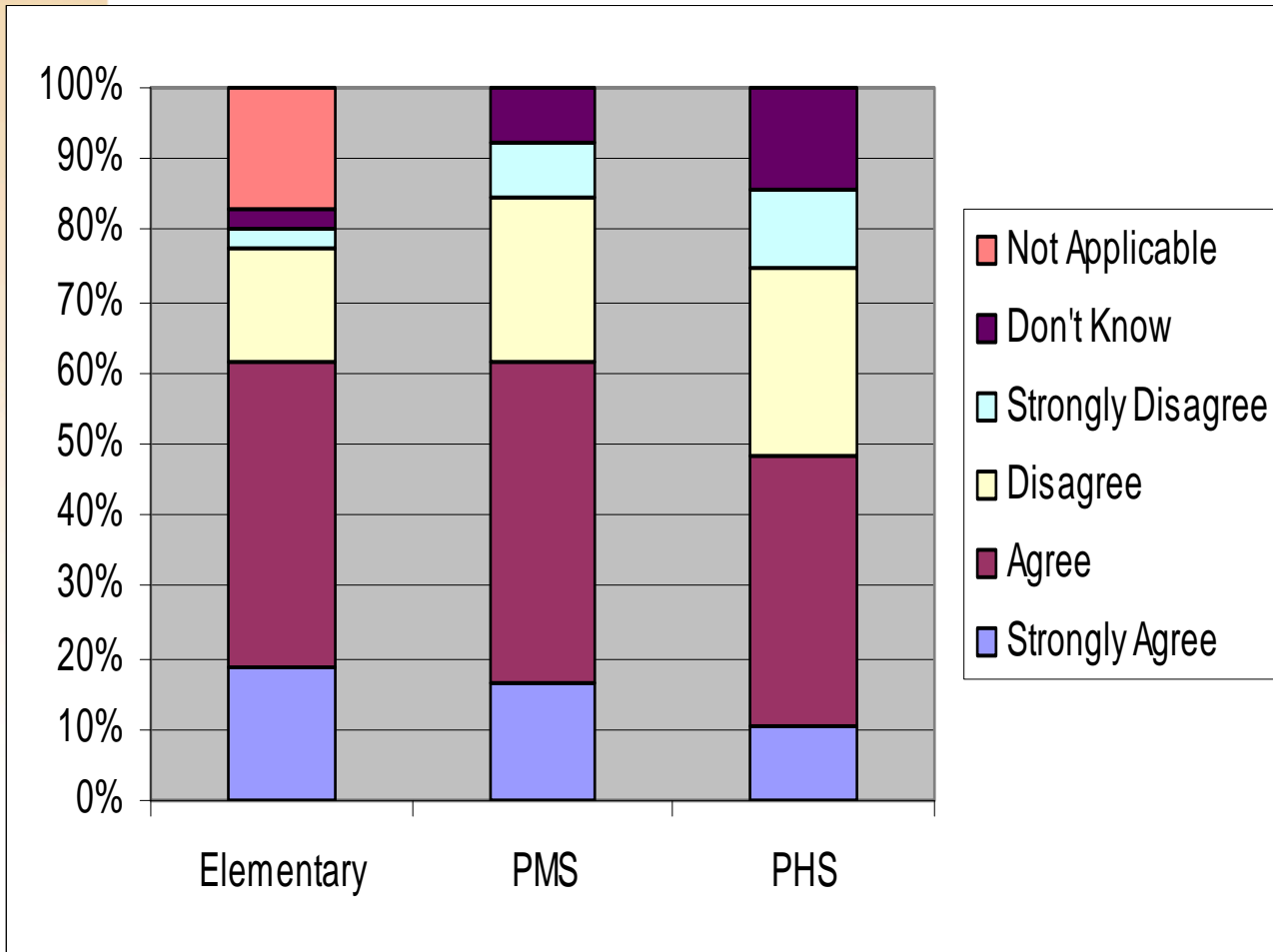
PMS Homework



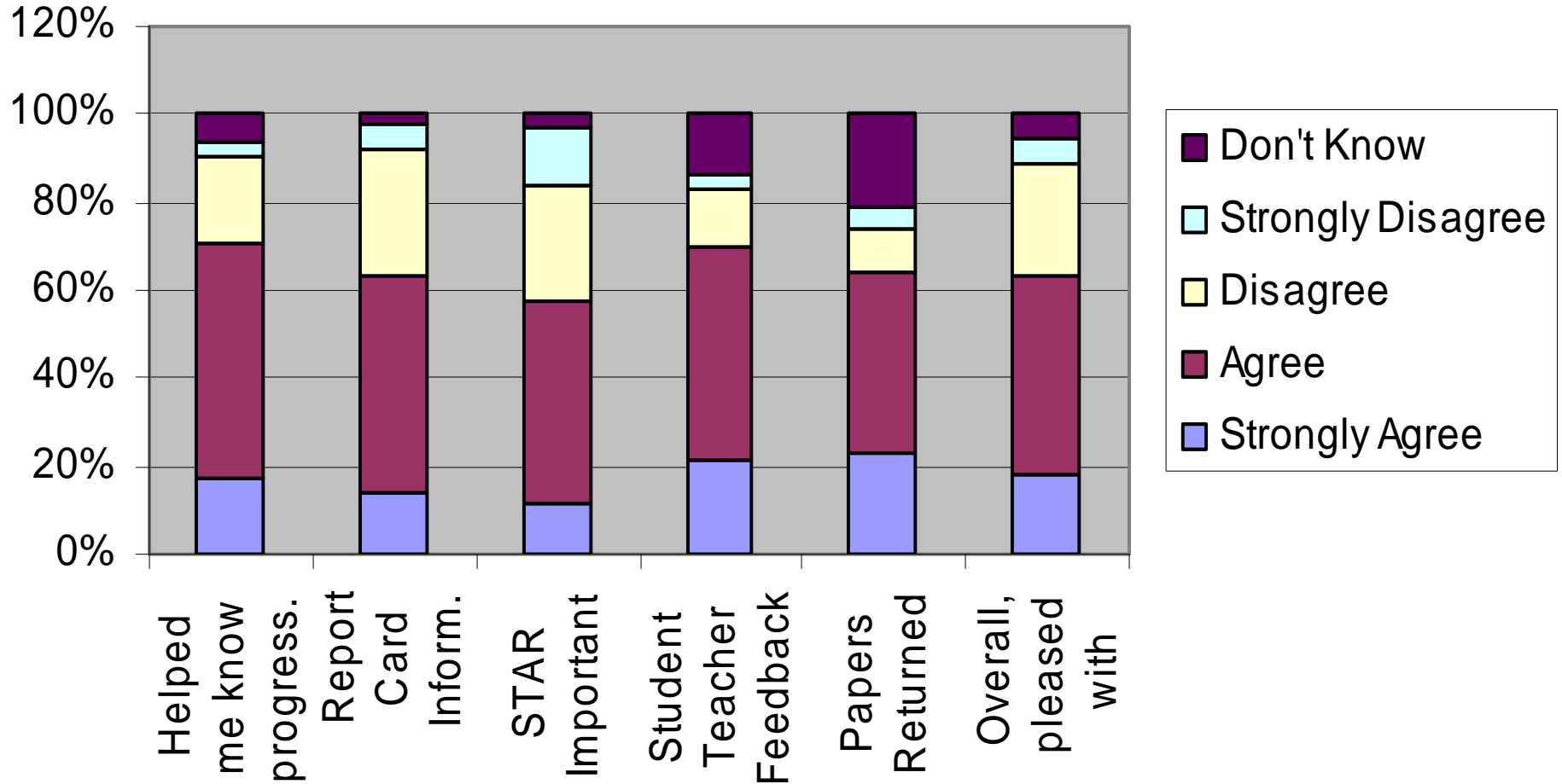
PMS Homework



Assessment



PMS Assessment



Next Steps

- Site Councils will utilize the results of this information in combination with standardized test data and teacher/administrator/student (PMS/PHS) feedback to review and provide input into the District's ELA program recommendations, which will go before the Board in April – June 2011.

