

# California Dashboard: Local Indicators

Stephanie Griffin  
Director of Instructional Technology

Cheryl Wozniak  
Director of Curriculum & Instruction

Board of Education Meeting  
November 8, 2017



<https://goo.gl/Hvfnoj>

# California Dashboard Accountability Model

California's new accountability and continuous improvement model provides measures relating how Districts and schools are making progress to meet the needs of our diverse student population.

[California Dashboard Video](#)

[California School Dashboard](#)

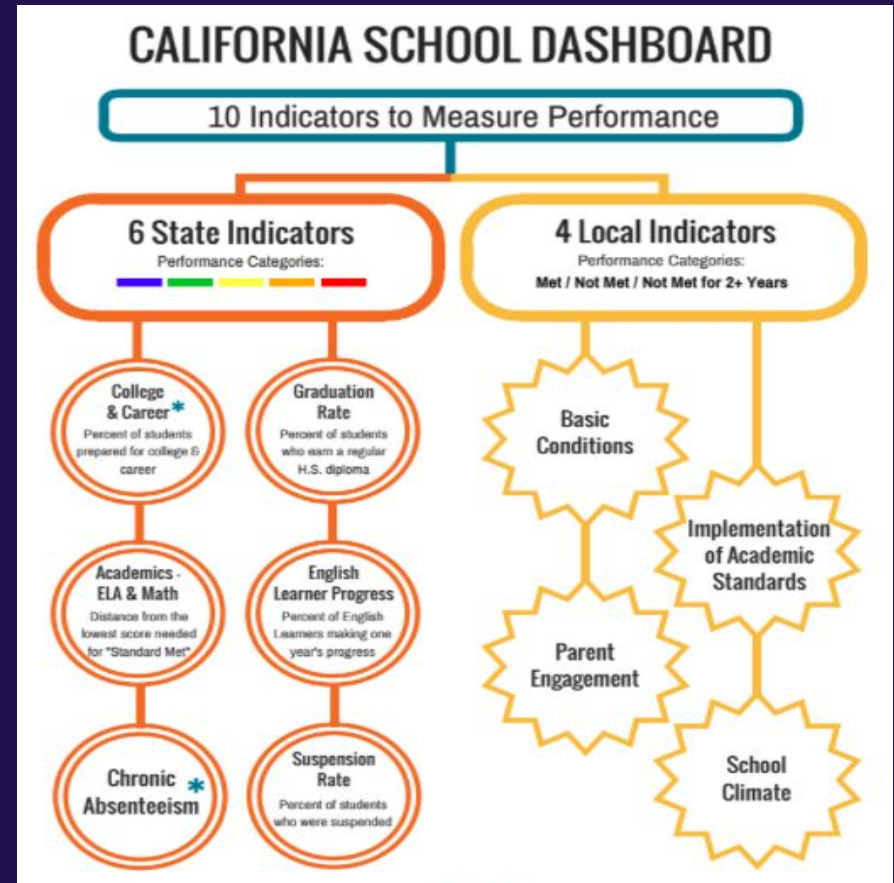
[California Five by Five Model](#)

[Previous Presentation to School Board on State Indicators](#)

# New Accountability System

## California Dashboard

- ▶ Measure performance on State Priorities in 10 areas
- ▶ 6 state indicators
- ▶ 4 local indicators
- ▶ Publicly released in spring 2017



# New Accountability System

## California Dashboard

- ▶ Measure performance on State Priorities in 10 areas
- ▶ 6 state indicators
- ▶ 4 local indicators
- ▶ Publicly released in spring 2017



# Criteria

**District performance is reported based on meeting the standard as:**

- Met\*
- Not Met
- Not Met for Two or More Years

\*In the 2017-2018 school-year, Districts will be considered as having “Met” if they have reported the results.

# Piedmont Unified's Local Indicators



# Priority 1: Basic Conditions - MET

Data is based on School Accountability Report Card from 2015-2016:

## Teachers

Number/percentage of mis-assignments of teachers of English Learners: 0

Total teacher mis-assignments: 0

Total teacher mis-assignments: 0

Vacant teacher positions: 0

## Books

Number/percentage of students without access to their own copies of standards-aligned instructional materials for use at school and at home: 0

## Facilities

Number of identified instances where facilities do not meet the “good repair” standard: 0

## Priority 2: Implementation of Academic Standards- *Professional Development- MET*

Content Area	1	2	3	4	5
ELA Common Core State Standards for ELA				X	
ELD (Aligned to ELA Standards)		X			
Math- Common Core State Standards for Mathematics					X
NGSS Next Generation Science Standards				X	
HSS History Social Science		X			

Rate the LEA's progress in providing professional learning for teaching to the recently adopted academic standards and/or curriculum frameworks

Rating Scale (lowest to highest):  
 1 – Exploration and Research Phase;  
 2 – Beginning Development;  
 3 – Initial Implementation;  
 4 – Full Implementation;  
 5 – Full Implementation & Sustainability



## Priority 2: Implementation of Academic Standards- Instructional Materials - MET

Content Area	1	2	3	4	5
Common Core State Standards for English Language Arts (ELA)			X		
Common Core State Standards for Mathematics					X
English Language Development (ELD) (Aligned to ELA Standards)		X			
Next Generation Science Standards (NGSS)		X			
History Social Science Standards (HSSS)				X	

Rate the LEA's progress in making instructional materials that are aligned to the recently adopted academic standards and/or curriculum frameworks identified below available in all classrooms where the subject is taught:

Rating Scale (lowest to highest):

- 1 – Exploration and Research Phase;
- 2 – Beginning Development;
- 3 – Initial Implementation;
- 4 – Full Implementation;
- 5 – Full Implementation & Sustainability

## Priority 2: Implementation of Academic Standards- Policies and Programs - MET

Content Area	1	2	3	4	5
Common Core State Standards for English Language Arts (ELA)				X	
Common Core State Standards for Mathematics				X	
English Language Development (ELD) (Aligned to ELA Standards)	X				
Next Generation Science Standards (NGSS)			X		
History Social Science Standards (HSSS)	X				

Rate the LEA's progress in implementing policies or programs to support staff in identifying areas where they can improve in delivering instruction aligned to the recently adopted academic standards and/or curriculum frameworks identified below (e.g., collaborative time, focused classroom walkthroughs, teacher pairing):

Rating Scale (lowest to highest):

- 1 – Exploration and Research Phase;
- 2 – Beginning Development;
- 3 – Initial Implementation;
- 4 – Full Implementation;
- 5 – Full Implementation & Sustainability

## Priority 2: Implementation of Academic Standards- Other Adopted Academic Standards - MET

Content Area	1	2	3	4	5
Career Technical Education			X		
Health Education Content Standards				X	
Physical Education Model Content Standards					X
Visual and Performing Arts				X	
World Language					X

Rate the LEA's progress implementing each of the following academic standards adopted by the state board for all students:

Rating Scale (lowest to highest):  
 1 – Exploration and Research Phase;  
 2 – Beginning Development;  
 3 – Initial Implementation;  
 4 – Full Implementation;  
 5 – Full Implementation & Sustainability

## Priority 2: Implementation of Academic Standards- Support For Teachers and Administrators - MET

Content Area	1	2	3	4	5
Career Technical Education			X		
Health Education Content Standards			X		
Physical Education Model Content Standards					X
Visual and Performing Arts				X	
World Language				X	

Rate the LEA's success at engaging in the following activities with teachers and school administrators:

- Identifying the professional learning needs of groups of teachers
- Identifying the professional learning needs of individual teachers
- Providing support for teachers on the standards they have not yet mastered

Rating Scale (lowest to highest):

- 1 – Exploration and Research Phase;
- 2 – Beginning Development;
- 3 – Initial Implementation;
- 4 – Full Implementation;
- 5 – Full Implementation & Sustainability

## Priority 3: Parent Engagement *Progress Related To Promoting Parental Participation - Met*

PUSD provides opportunities for parent/guardians to engage in trainings, workshops and seminars related to student learning and social-emotional development and growth.

### Secondary Schools

Parent Participation in PHS WASC  
Self-study with staff

Math Pathways Information Nights

NGSS Secondary Parent Ed on Course  
Models

Consent Assembly Parent Preview

"Navigating in a Digital World" 3  
evening events on supporting families  
with personal technology use

### Elementary Schools

Tri-school Parent Education  
Night- Specialist Taught  
Classes

Puberty Education  
Presentation

Math Family Nights

### District-wide

"Changing the Way We Talk to Teens About  
Sexuality, Values and Health"- Al Vernacchio

"Supporting A Student Who Struggles in  
School"- Rick Lavoie

Girls & Sex In the Digital Age

"How To Raise An Adult"- Julie Lythcott-Haims

"Screenagers: Growing Up In The Digital Age"

"How to Talk with your Kids about Money"-  
Ron Lieber

## Priority 3: Parent Engagement: *Seeking Input From Parents/Guardians In School/District Decision Making - MET*

PUSD seeks input from parents in advisory committees and active input in decision making through survey feedback:

- High School Activity Curfew Policy Survey
- High School Principals Recruitment Survey- traits, qualifications and educational vision desired survey
- Middle School Homework Policy Survey
- Middle School Late Start Survey
- Elementary Instruction Design Survey
- Elementary Art Program Survey
- Teacher and Administrator Evaluation Surveys

## Priority 3: Parent Engagement: *Findings Related To LCFF Priorities In LCAP*

Input received in surveys were critical components in action items related to LCAP Goal 1: All students will feel physically safe, emotionally cared for, and academically and socially included in their school environment.

## Priority 6: School Climate - Met

California Healthy Kids Survey was administered in spring of 2017 to students in grades 7, 9 and 11 (5th grade added in 2017-18) and measures key indicators related to school climate and student well-being:

- School Engagement and Supports
- School Safety
- Substance Abuse
- Mental and Physical Health



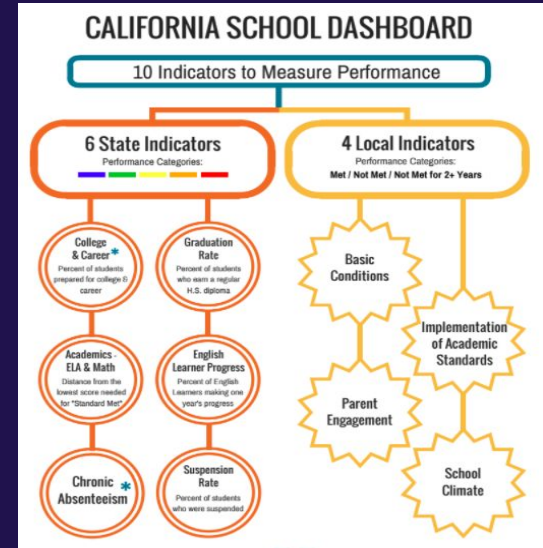
## Priority 6: School Climate - Met

Stanford Survey of Adolescent School Experiences was administered in 2016 to grades 6-12; measures students' perspectives in the following areas:

- Homework
- Extracurricular activities
- Sleep
- Physical health
- Stress
- Parent expectations
- Academic engagement
- Academic integrity
- Teacher support

# NEXT STEPS

- ❑ After presentation tonight, this information will be reported to the California Dashboard.
- ❑ Updated State and Local Indicators will be made public on December 1, 2017
- ❑ Measurement of Local Indicators is reported through the LCAP process



# GLOSSARY

- ❑ CCSS: Common Core State Standards
- ❑ LEA: Local Educational Agency
- ❑ LCFF: Local Control Funding Formula
- ❑ LCAP: Local Control and Accountability Plan
- ❑ DELAC: District English Learner Advisory Council
- ❑ ELA: English Language Arts
- ❑ ELD: English Language Development
- ❑ NGSS: Next Generation Science Standards
- ❑ HSSSS: History Social Science Standards
- ❑ WASC: Western Association of Schools and Colleges Accreditation Commission

