

Piedmont Unified School District 2010 English Language Arts Survey

Presented by David Roth, Ph.D.
Assistant Superintendent of Educational Services
Board of Education Meeting, September 29th, 2010



Participants

- Parents of students at Beach, Havens, Wildwood, PMS, and PHS were invited to participate via email, parent newsletter, and at the end of the online registration process.



Participants

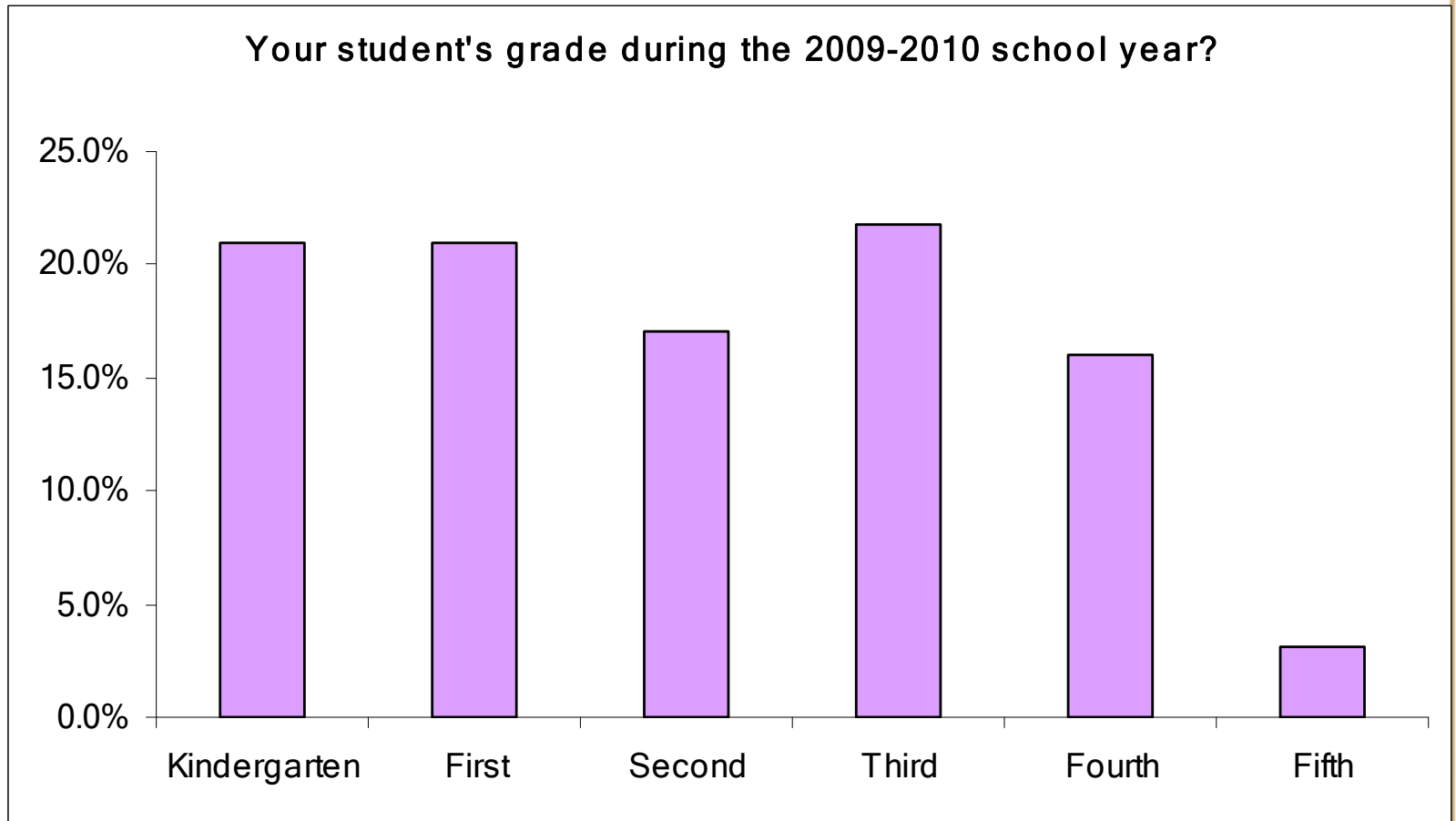
School	09-10 Enroll.	Completed Surveys	Percent of Enrollment
Elementary	1098	277	25%
PMS	588	250	43%
PHS	782	341	44%
Total	2468	868	35%



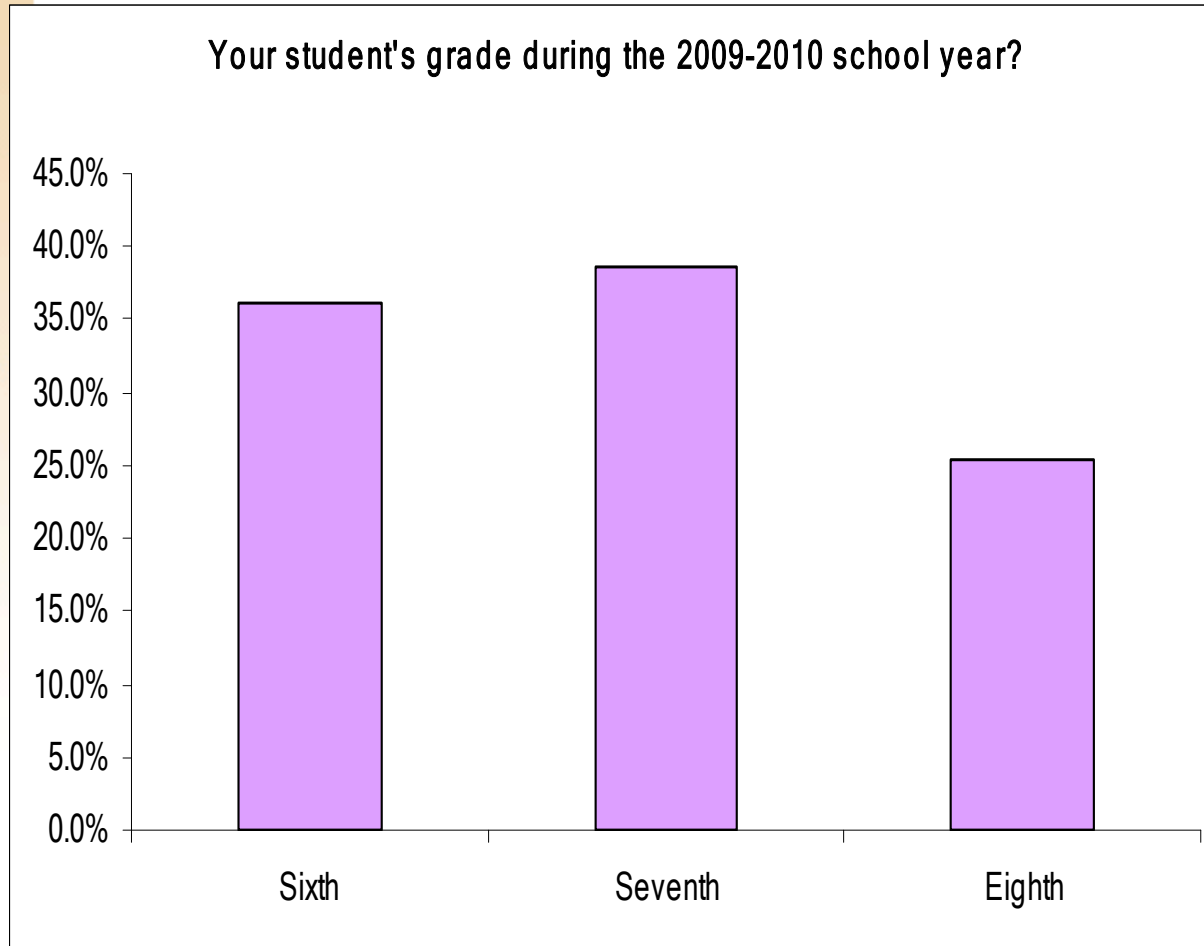
Level of overall satisfaction with the educational program in Piedmont Unified.

	Very Satisfied	Satisfied	VSat + Sat
Beach (114)	60%	35%	95%
Havens (85)	40%	48%	88%
Wildwood (58)	52%	43%	95%
All Elem. (277)	50%	42%	92%
PMS (250)	50%	42%	92%
PHS (341)	28%	60%	88%

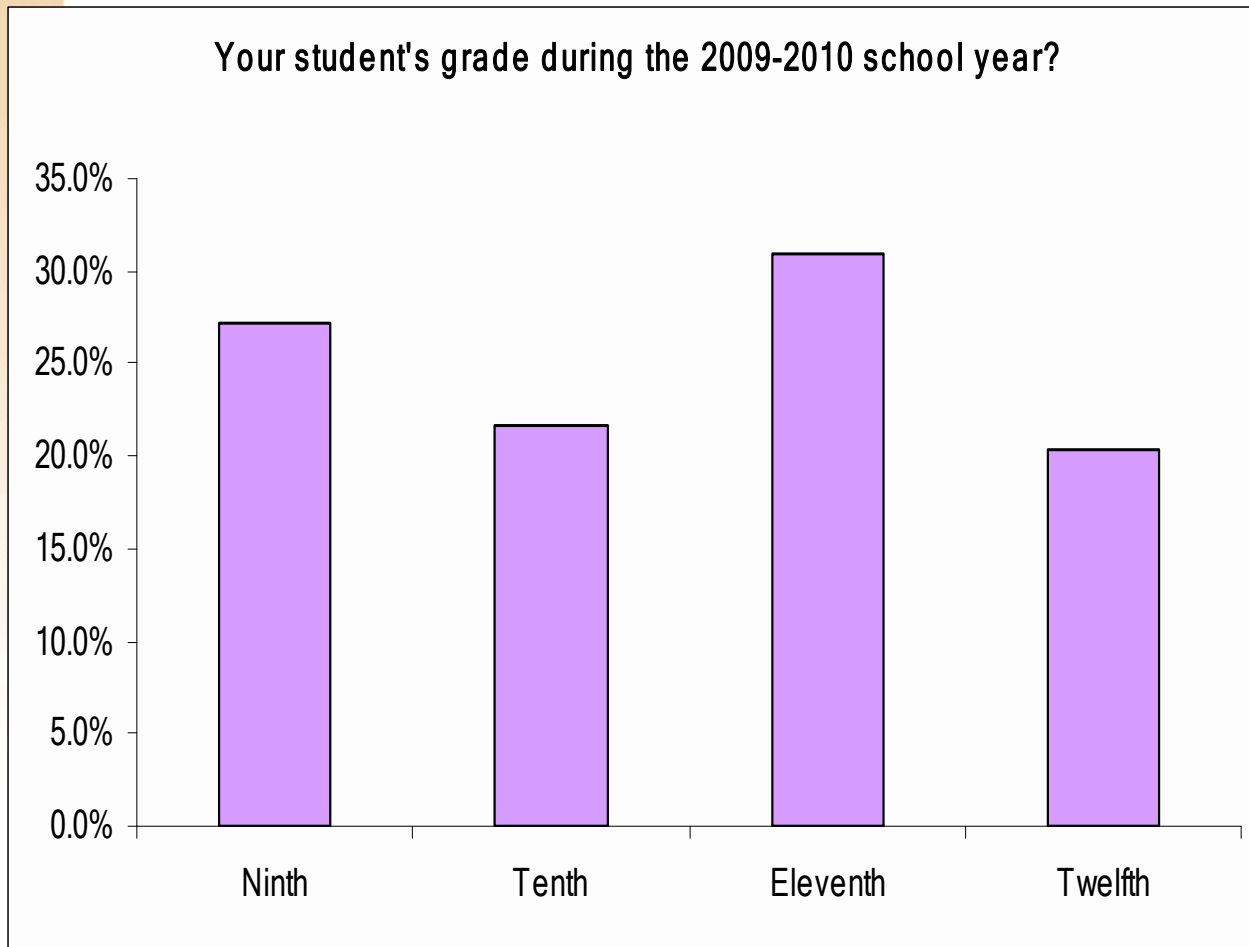
Elementary Participants



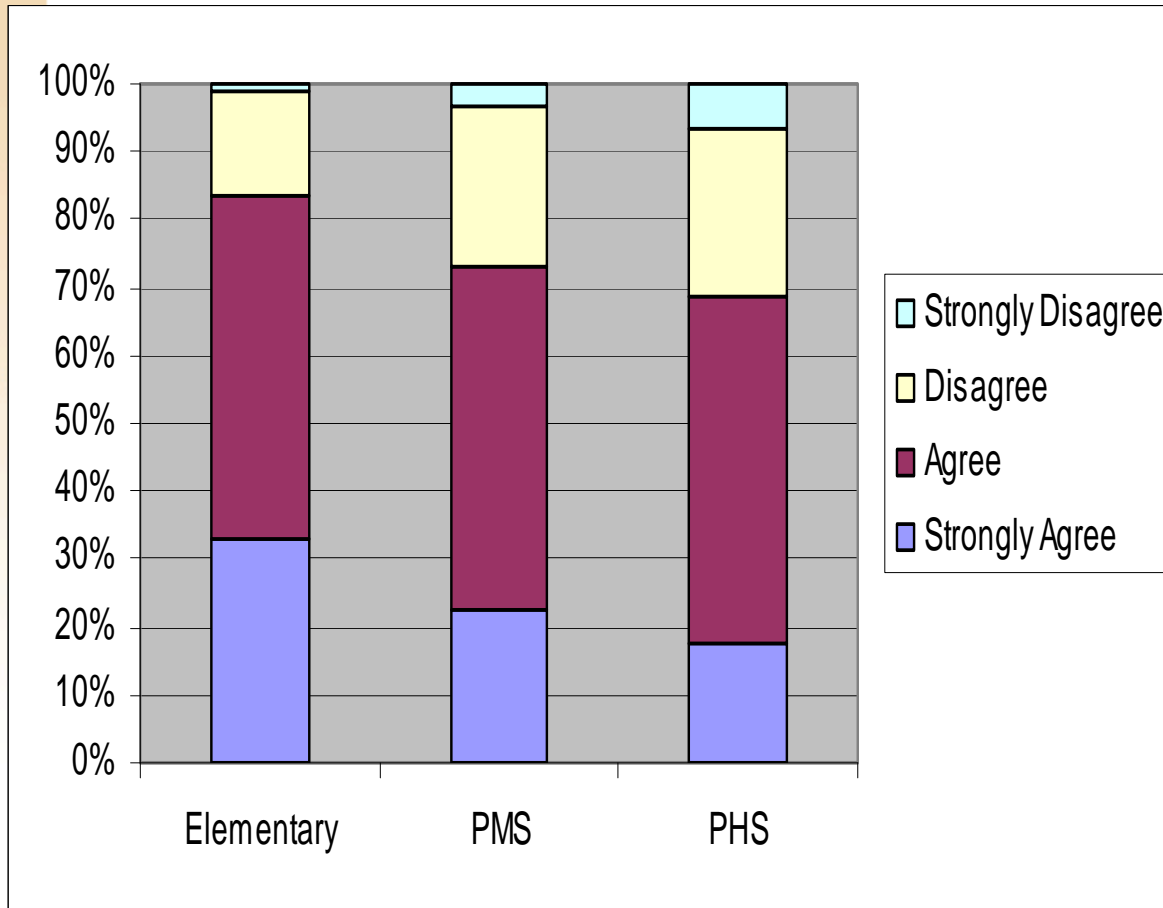
PMS Participants



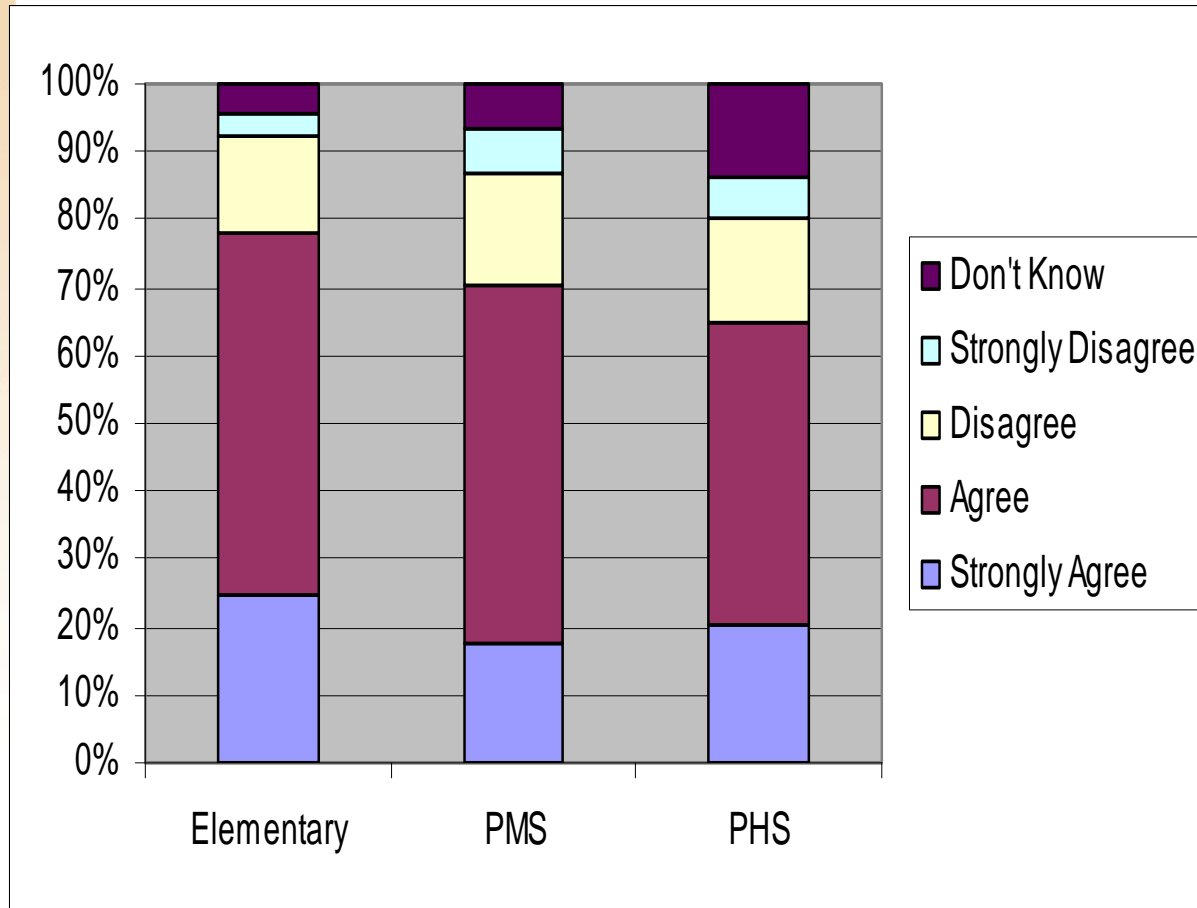
PHS Participants



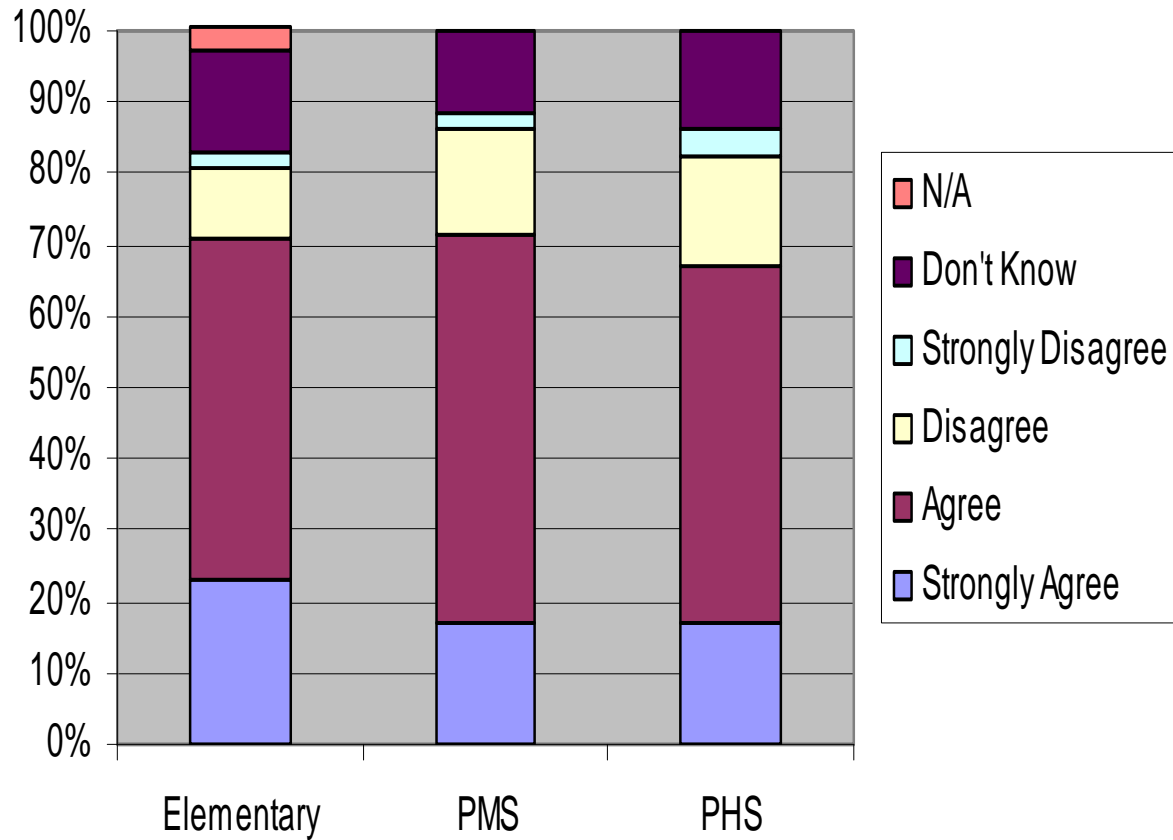
Communications



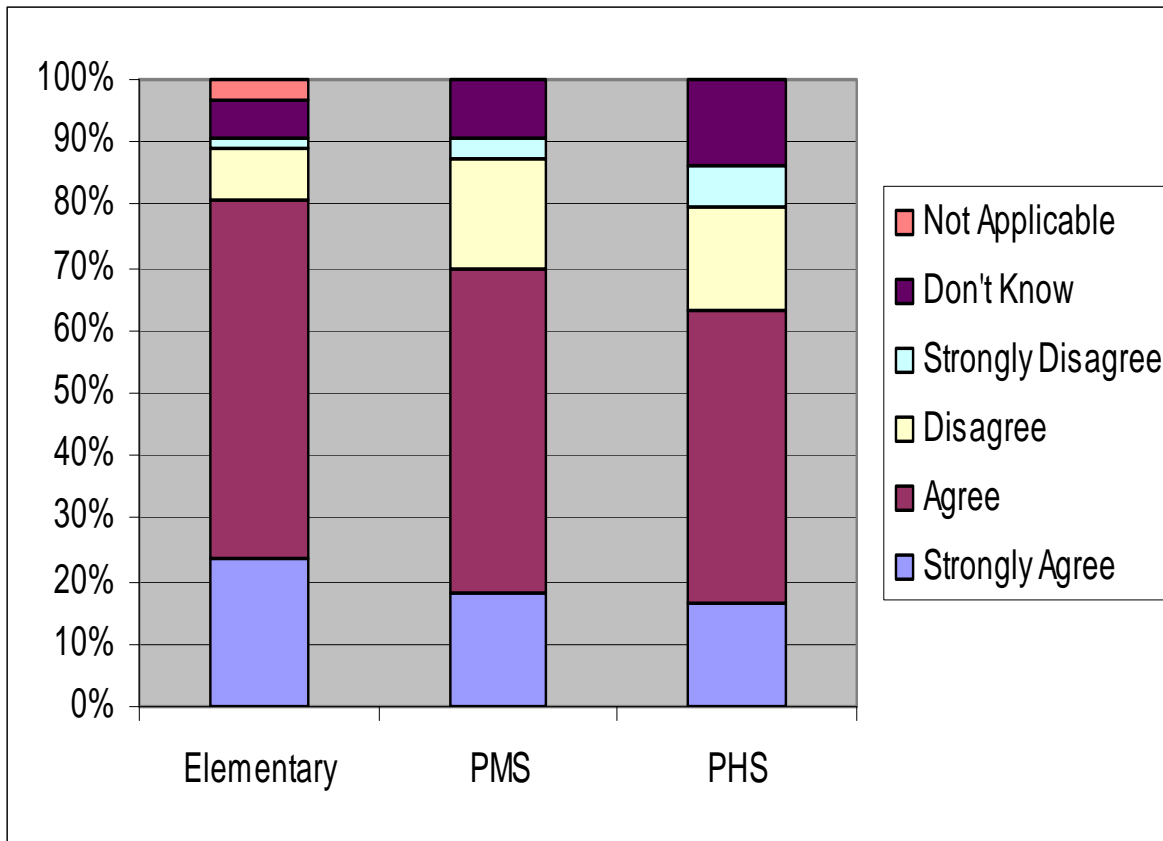
Sufficiency of Challenge and Support



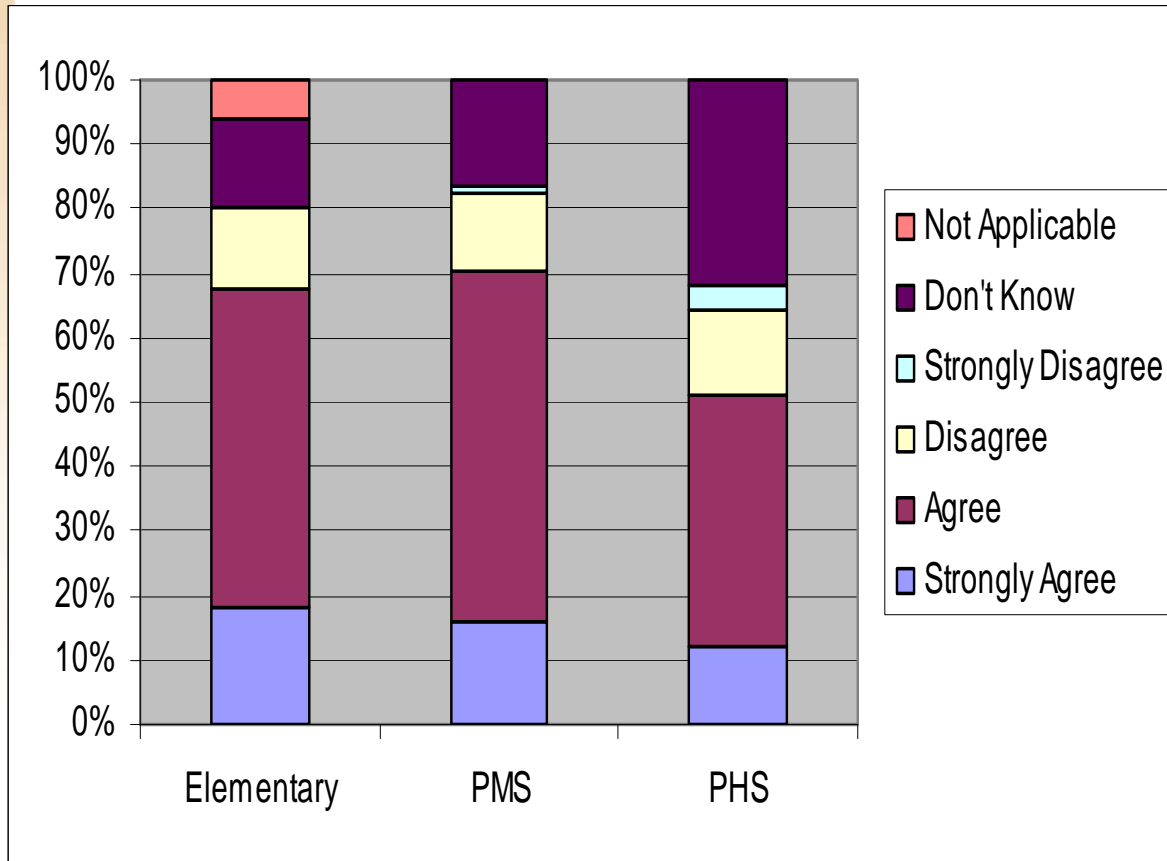
Reading



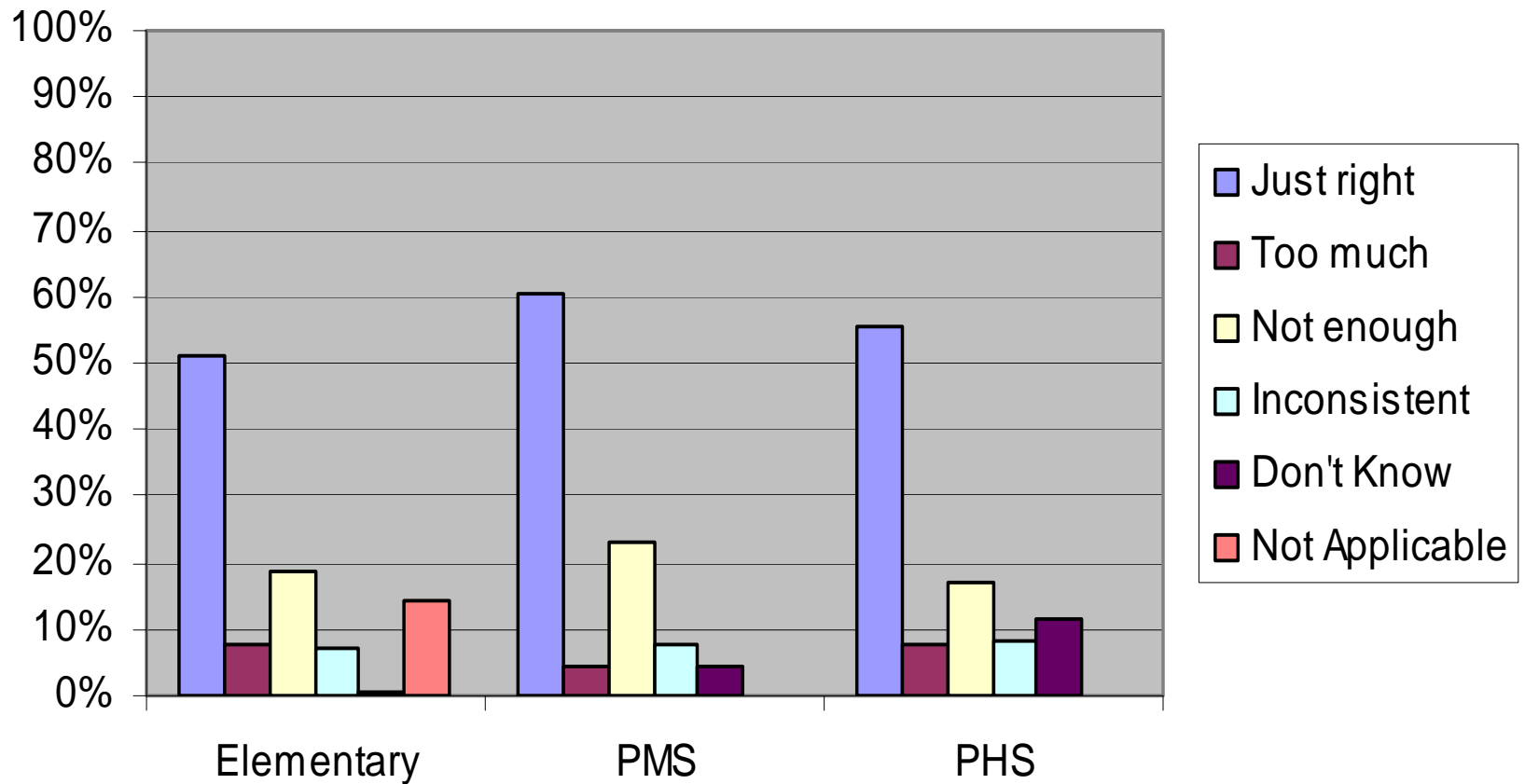
Writing



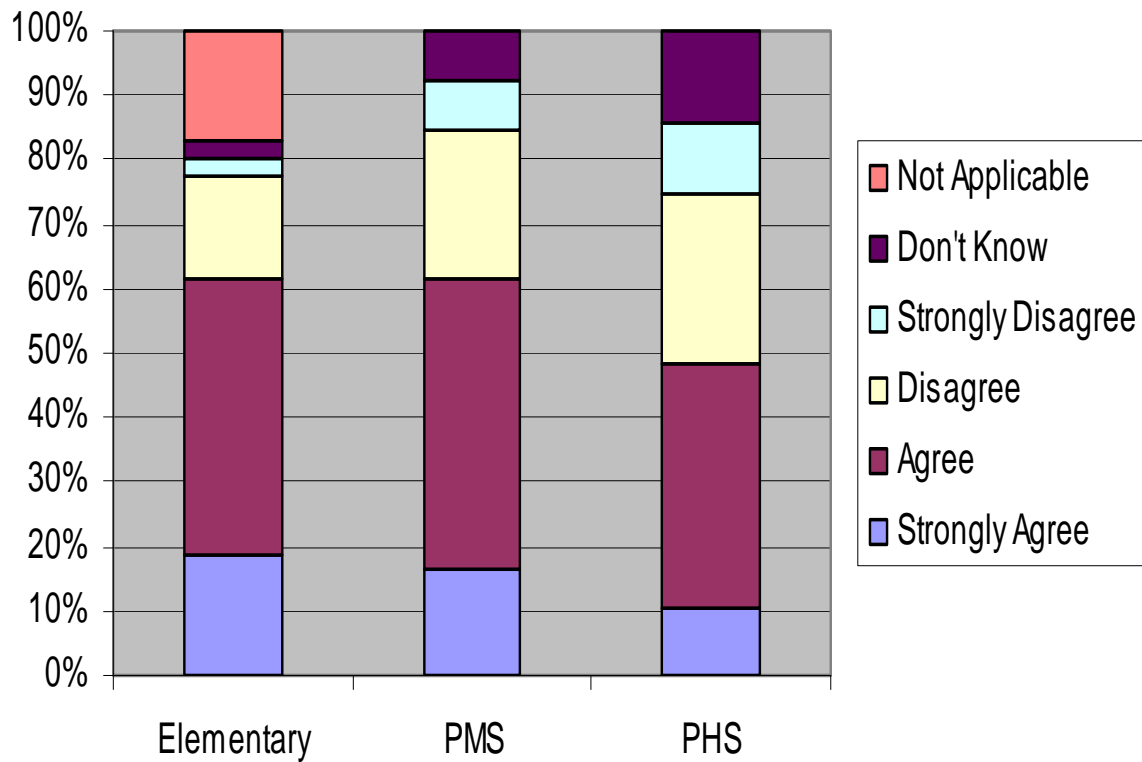
Speaking



Homework – Amount & Difficulty



Assessment



Next Steps

- Site Councils will utilize the results of this information in combination with standardized test data and teacher/administrator/student (PMS & PHS) feedback to review and provide input into the District's ELA program recommendations, which will go before the Board in April – June 2011.

